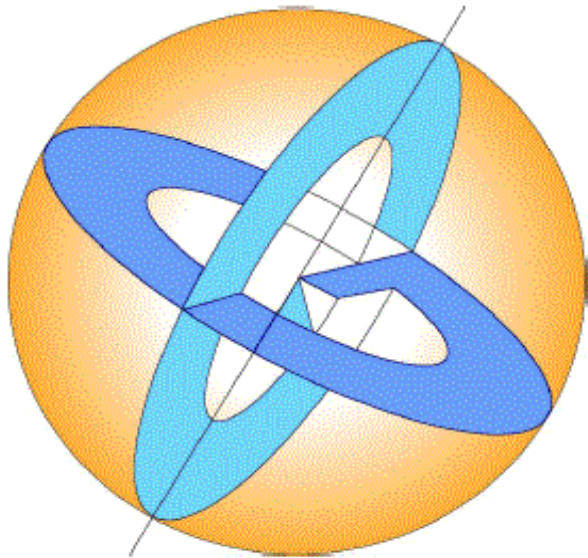


# ITIS GALILEO GALILEI PRESENTS...

Istituto Tecnico Industriale  
Statale

**Galileo GALILEI**



Via Conte Verde 51  
00185 Roma

THE HISTORY OF OUR  
SCHOOL AND ITS  
ECLECTIC  
ARCHITECTURAL STYLE

WE HOPE YOU LIKE IT!

# ITIS GALILEO GALILEI - ROMA



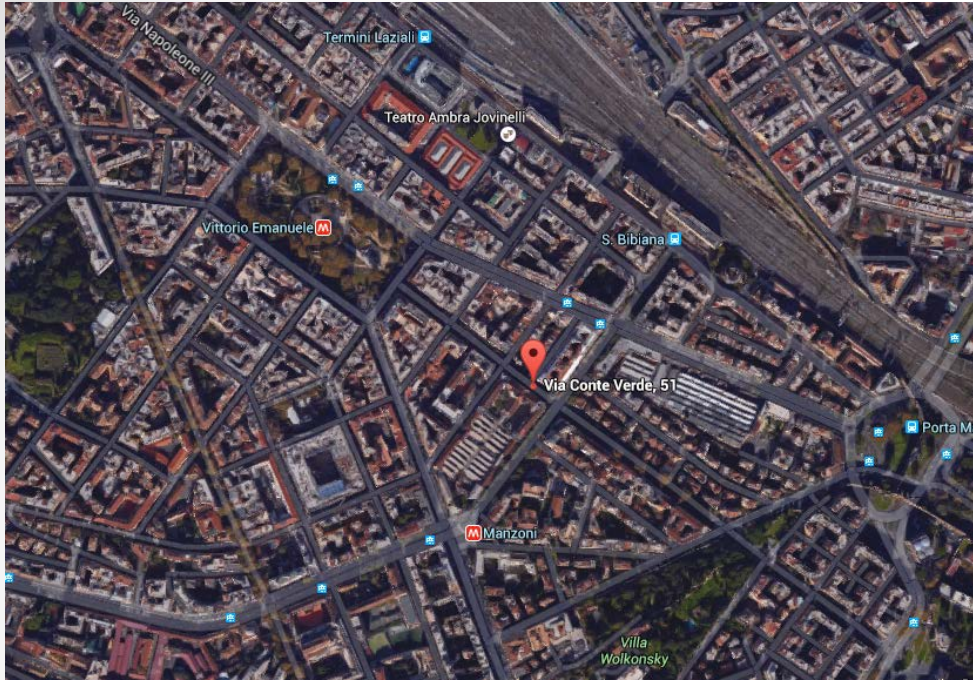
THE SCHOOL WAS BUILT IN 1918 AND IT WAS THE FIRST TECHNICAL INDUSTRIAL SCHOOL IN ROME.

IT OCCUPIES AN ENTIRE BLOCK

IT ALSO HAS 3 ENTRIES.  
DURING THE SECOND  
WORLD WAR IT WAS  
FURTHER MODIFIED.



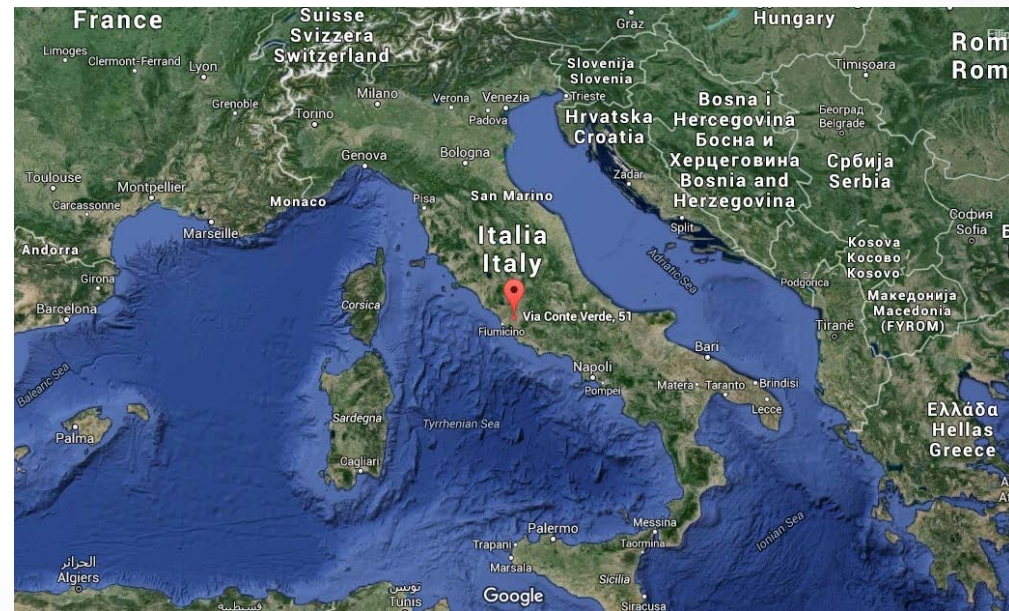
# THE SCHOOL LOCATION



THE SCHOOL HAS AN IMPORTANT CENTRAL POSITION WITH NEARBY PUBLIC SERVICES LIKE THE TUBE STATION, TRAIN STATION, BUS AND TRAM STOPS.

THE POSITION IS ALSO GREAT BECAUSE NEAR THE SCHOOL THERE ARE A LOT OF FAMOUS MONUMENTS LIKE :

- THE COLOSSEUM
- THE TREVI FOUNTAIN
- PIAZZA DEL POPOLO



# OUR SCHOOL DURING THE 20th century



**(1935)  
ELECTRIC  
MACHINES  
LABORATORY**



**(1935)  
MECHANICS  
TECHNOLOGY  
LABORATORY**



**(1935)  
THERMAL MACHINES  
LABORATORY**

# ECLECTIC ARCHITECTURE



The monumental facade with a Latin inscription.



Mosaic decorations by Duilio Cambellotti and his students, 1921.

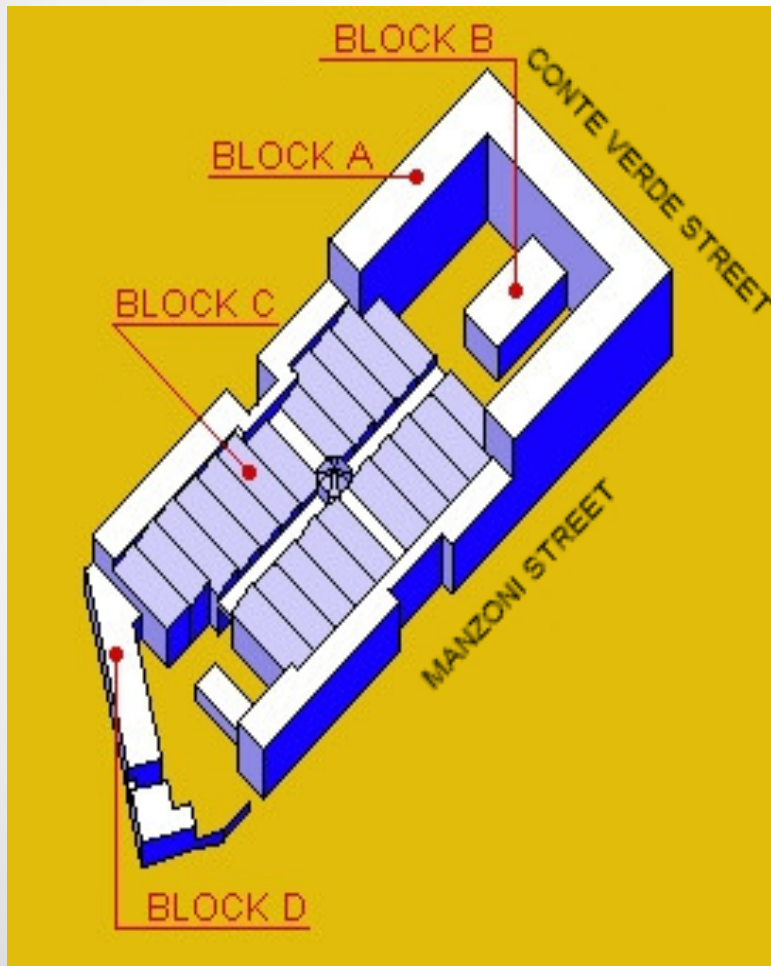


Historical arch inside the school, probably taken from a nearby important Villa.

# THE AUDITORIUM



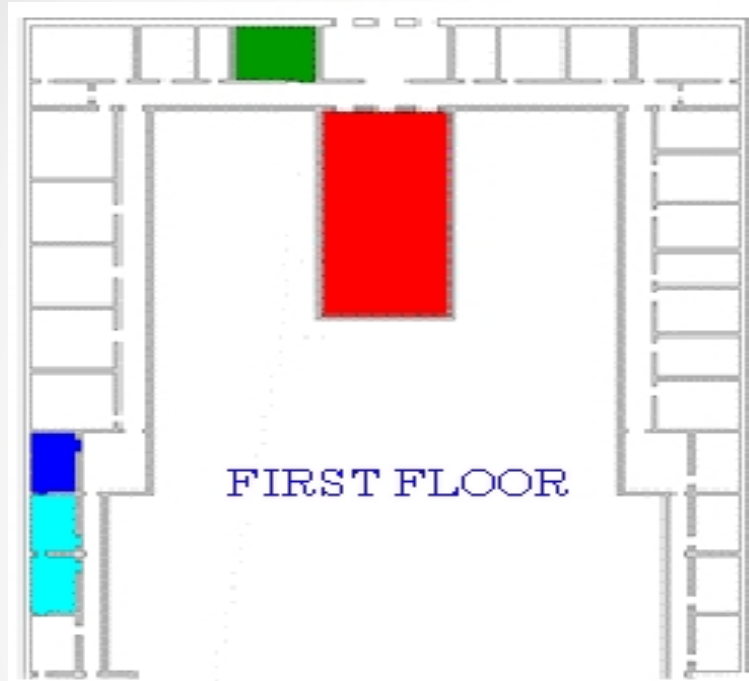
# SCHOOL STRUCTURE



THE SCHOOL IS COMPOSED OF A CENTRAL BUILDING WITH FOUR FLOORS AND A WORKSHOP CENTER.

BETWEEN THEM WE HAVE THE HALL AND ABOVE THAT THERE IS THE AUDITORIUM.

# 1ST AND 2ND FLOORS

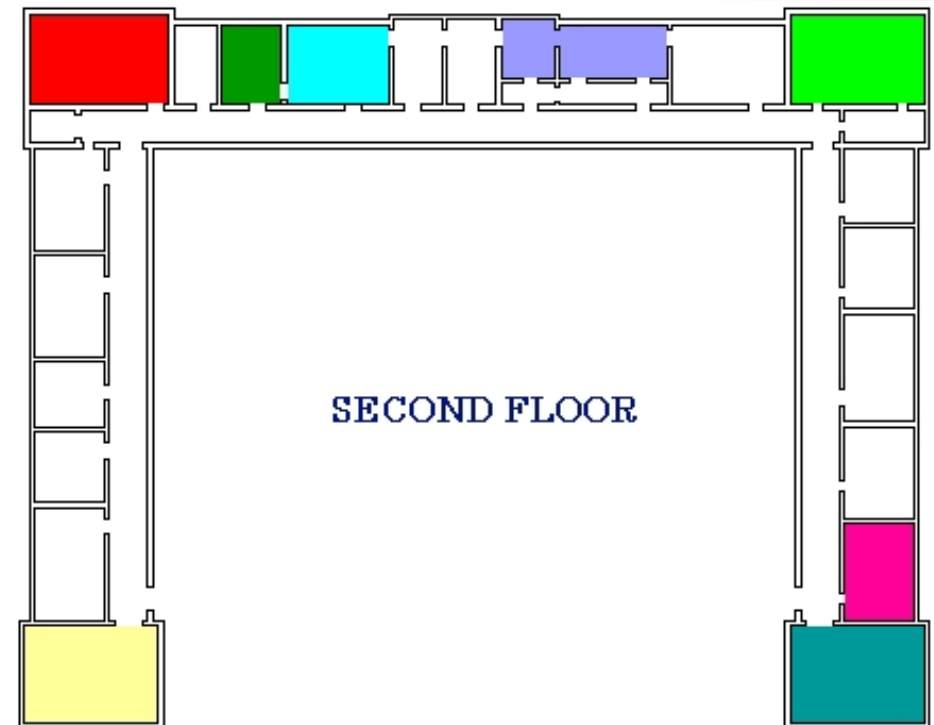


ON THE FIRST FLOOR:

- AUDITORIUM
- MUSIC LABORATORY
- BIOLOGY LABORATORY
- CHEMISTRY LABORATORY

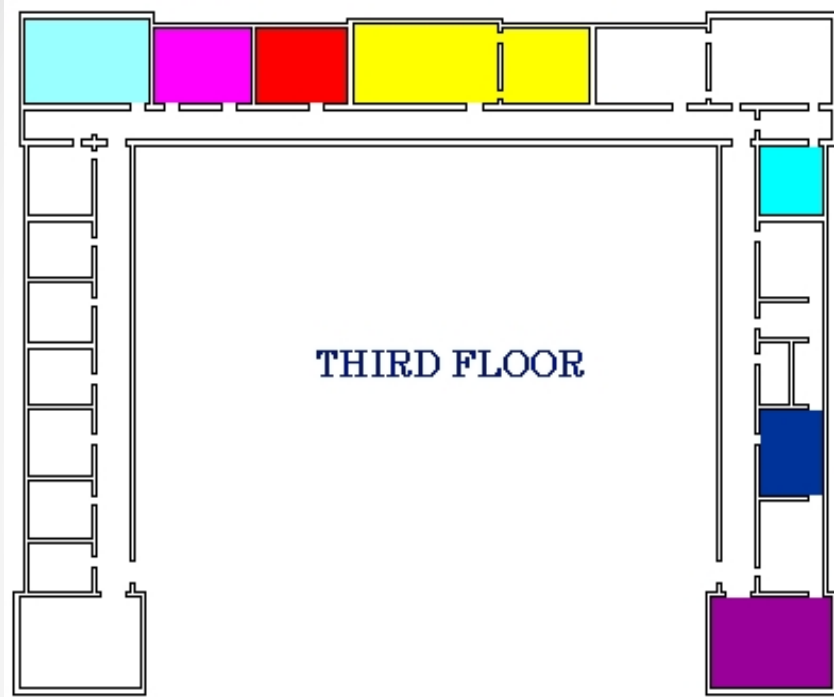
ON THE SECOND FLOOR:

- TEACHER'S ROOM
- PRINCIPAL'S OFFICE
- VICE- PRINCIPAL'S OFFICE
- ADMINISTRATIVE OFFICES
- I.T. LABORATORY



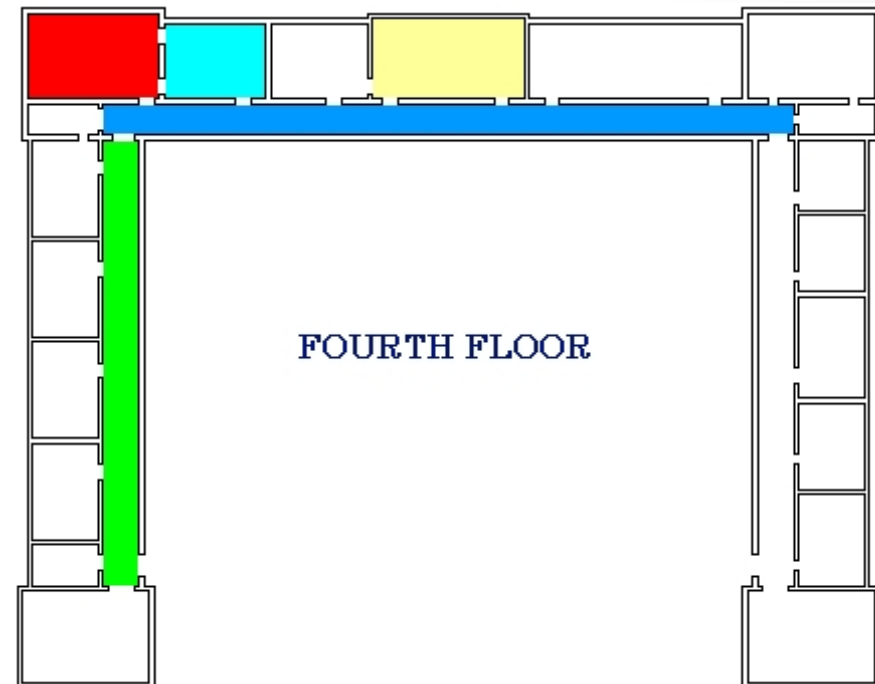


# 3RD AND 4TH FLOORS



ON THE THIRD FLOOR:

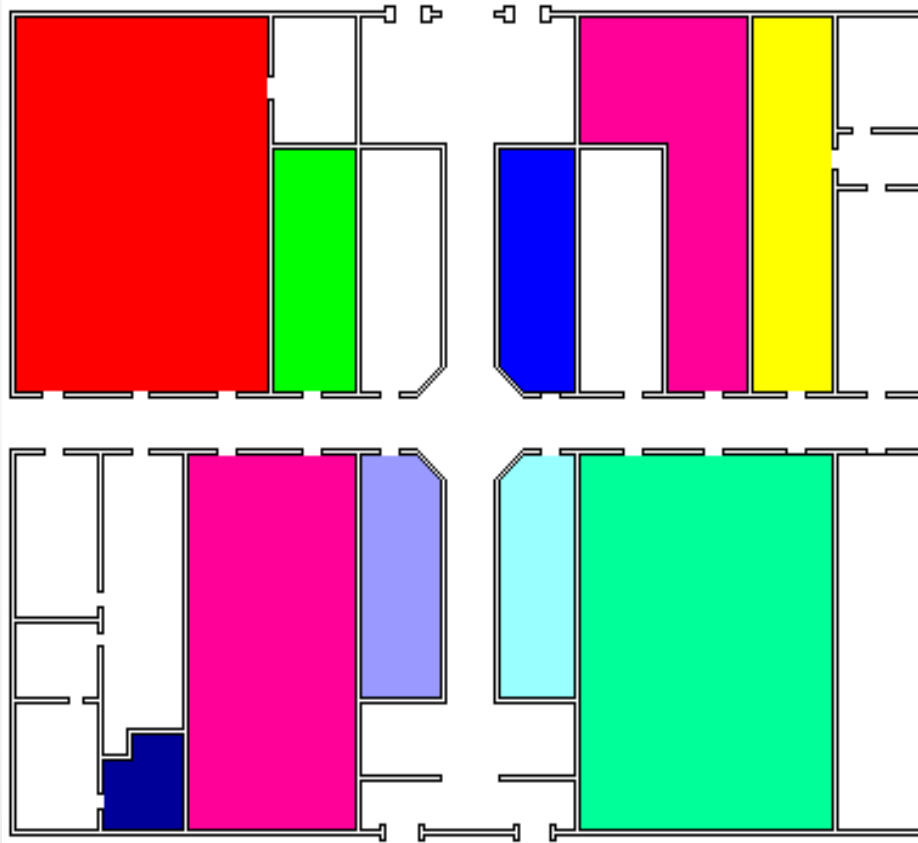
- ELECTRONICS LABORATORY
- TELECOMMUNICATIONS LAB.
- PHYSICS LABORATORY
- PHYSICS AMPHITHEATER



ON THE FOURTH FLOOR:

- CAD CLASS (COMPUTER AIDED DESIGN)
- TWO DESIGN LABORATORIES

# WORKSHOPS



IN THE WORKSHOP AREA:

- GYMS
- MECHANICS LABORATORY
- CAD CLASS
- AERONAUTICS LAB
- WIND TUNNEL
- ELECTRONICS LAB
- ELECTROTECHNICS LAB

# TOP VIEW OF HUGE WORKSHOP AREA



# ADVANTAGES AND DISADVANTAGES OF large SCHOOL STRUCTURE

## ADVANTAGES:

- LOTS OF SPACE FOR ADVANCED LABORATORY
- LOTS OF SPECIALIZATIONS
- THE SCHOOL PRODUCES PART OF THE ENERGY IT USED TO POWER ITSELF

## DISADVANTAGES:

- THE HUGE SIZE OF THE SCHOOL IMPLIES MOVING A LOT
- SINCE THE SCHOOL WAS BUILT AT THE BEGINNING OF THE 20TH CENTURY , its layout isn't as functional to student and teacher needs as modern schools.

# SPECIALIZATION COURSES (STARTING IN THIRD YEAR)

## TECHNICAL SCHOOL:

AFTER A COMMON TWO-YEAR STUDY COURSE , STARTING IN YEAR 3  
STUDENTS CONTINUE IN ONE OF THE FOLLOWING COURSES:

- ELECTROTECHNICS
- AUTOMATION
- TELECOMMUNICATION
- MECHANICS AND MECHATRONICS
- AIRCRAFT CONSTRUCTION

## SCIENTIFIC LYCEUM:

- APPLIED SCIENCES SECTOR OF SCHOOL (YEARS 1-5)

# OUR SPECIALIZATION COURSE:

## ELECTRONICS AND ELECTROTECHNICS

The electrotechnics course blends scientific and technological competences in the field of materials, design, construction and subsequent inspection testing in productive contexts regarding electric and electronic systems, electrical wiring circuits and automation networking. More particularly, students focus on the design, production and management of civil and industrial electric systems and installations.

	3 <sup>rd</sup> year	4 <sup>th</sup> year	5 <sup>th</sup> year
Italian	4	4	4
History	2	2	2
English	3	3	3
Mathematics	3	3	3
Complimentary mathematics	1	1	
Electrical and electronic systems design and technology and lab *	5	5	6
Electrotechnics and electronics and lab *	7	6	6
Automatic systems *	4	5	5
Physical education	2	2	2
Catholic religion or alternative activity	1	1	1
Total hours/week including laboratory hours* in brackets	32 (8*)	32 (9*)	32 (9*)

**Looking forward to seeing you in  
Rome!!!**

